

BCZ8030

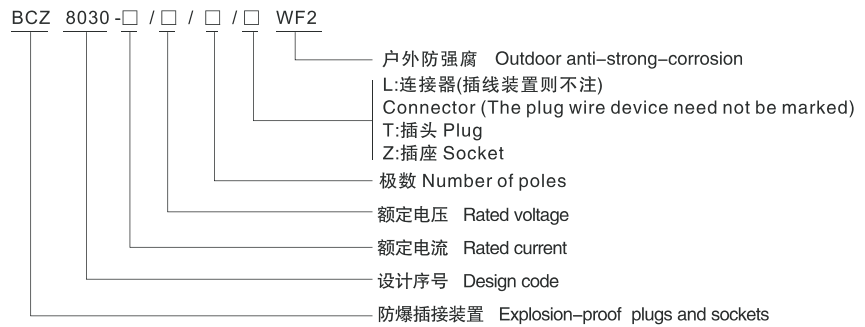
系列防爆防腐插接装置(ⅡC)



适用范围 Application

- 适用于1区、2区危险场所。
- 适用于ⅡA、ⅡB、ⅡC类，温度组别为T1~T6的爆炸性气体环境。
- Can be used in hazardous areas: Zone 1 and Zone 2.
- Can be used in explosive gas atmospheres of Category IIA、IIB and IIC where the temperature classification is T1 ~ T6.

型号含义 Model implication



技术参数 Technical parameters

- 执行标准: GB 3836.1、GB 3836.2、GB 3836.3、IEC60079
- 防爆标志: Exed Ⅱ CT6
- 防护等级: IP65
- 防腐等级: WF2
- Implementing the standard : GB 3836.1、GB 3836.2、GB 3836.3、IEC60079
- Explosion-proof mark: Exed Ⅱ CT6
- Protection grade: IP65
- Explosion-proof class: WF2

BCZ8030

Type explosion-proof corrosion-proof plug and socket (II C)

产品型号 Type	额定电压 (V) Rated voltage	额定电流(A) Rated current	极数 Poles	进线口螺纹 (G") Inlet's thread	电缆外径 (ϕ ,mm) Cable's outside diameter
BCZ8030-16	220	16	1P+N+PE	3 / 4	9 ~ 14
	380		3P+N+PE		
BCZ8030-32	220	32	1P+N+PE	1	11 ~ 18
	380		3P+N+PE		
BCZ8030-63	220	63	1P+N+PE	1 1 / 2	17 ~ 28
	380		3P+N+PE		
BCZ8030-16/ \square L	220	16	1P+N+PE	3 / 4-1	9~18
	380		3P+N+PE		

注：连接器作为电缆远距离连接之用，连接器电流仅限于16A。

Note: Linker used for connecting distance-cable, Linker current is only limited to 16A.

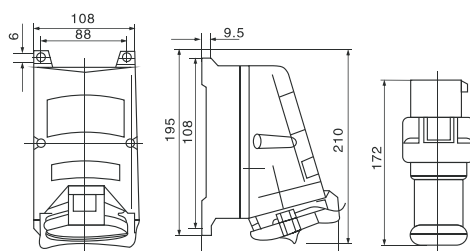
产品特点 Features

- 外壳采用高强度难燃工程塑料压制而成，具有耐腐蚀，抗静电，耐冲击及热稳定性好等优良性能；
 - 具有连锁结构，只有插座内的开关分断后方能拔出插头；
 - 插座上设有挂锁，在不使用时，可通过挂锁锁定，可使插座罩盖无法打开，便于现场监控；
 - 钢管或电缆布线。
- The enclosure is made of high rigid, flame-proof engineering plastic with aesthetic outline, functions of electrostatic-resistant, impulsion-withstanding, thermal stability and corrosion-proofing.
 - With interlocks, only if the switch inside socket is off, the plug can be brought out.
 - Provision is made to offer padlock on socket. If out of operation, the socket cover can't be opened by pad lock, so that local inspection and witness are easy.
 - Conduit wiring or cable wiring.

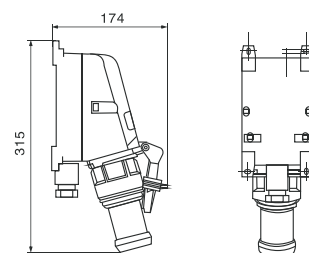
BCZ8030

系列防爆防腐插接装置(II C)

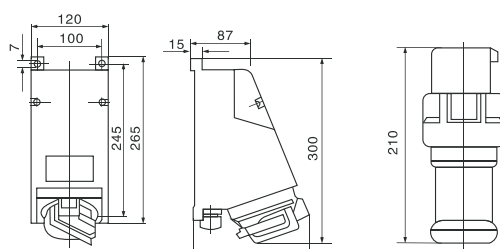
外形及安装举例 Outline and mounting example



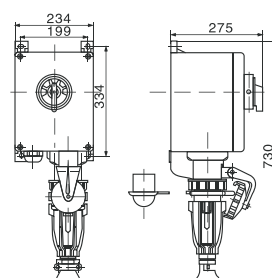
BCZ8030-16



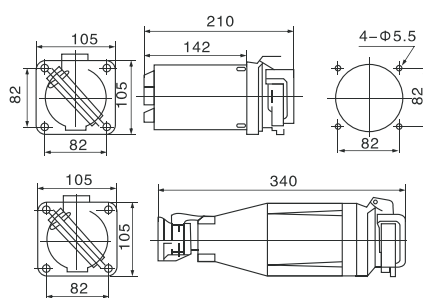
BCZ8030-16



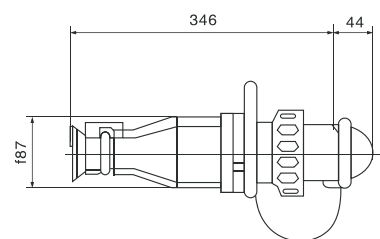
BCZ8030-32



BCZ8030-63



BCZ8030-16(连接器)



插头 Plug