

DQM

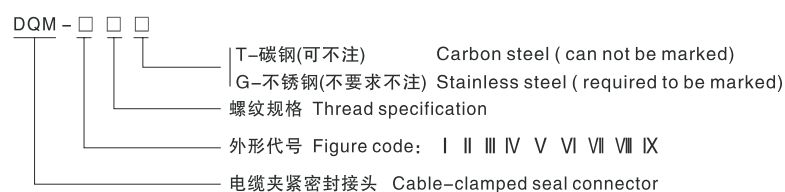
系列夹紧密封接头 (II C、DIP)



适用范围 Application

- 适用于1区、2区危险场所。
- 适用于II A、II B、II C类爆炸性气体环境。
- Can be used in hazardous areas: Zone 1 and Zone 2.
- Can be used in explosive gas atmospheres of Category IIA、IIB and II C.

型号含义 Model implication



外形及安装举例 Outline and mounting example

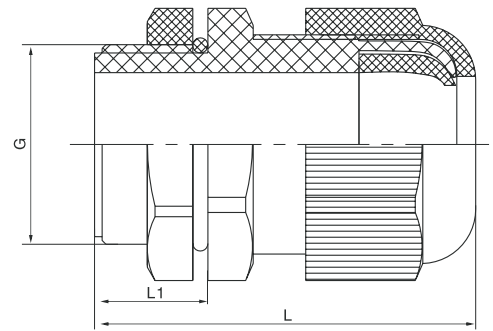
I 型: 采用工程塑料压制而成, 具有较强的防腐和防水性能, 适用于增安型外壳中作引入装置用。

Type I: Made of engineering plastic, corrosion-proof and water-proof, it is used as leading device in safety-increased shell.

产品型号 Type	螺纹规格 Thread specification		外螺纹长度 (L,mm) Outer thread length	密封电缆直径范围 Sealing cable diameter range		长度 (mm) length	防爆标志 Ex-mark	防护等级 Protection grade
	PG螺纹 Thread	管螺纹(G*) Pipe thread		PG螺纹 Thread	管螺纹(G*) Pipe thread			
DQM-I	PG9	1/2	8	5-8	7-9	55	Exd II C Gb /DIP A20	IP65
	PG11	3/4	8	5-10	8-14	55		
	PG13.5	1	9	6-12	12-17	67		
	PG16	1 1/4	10	10-14	13-23	67		
	PG21	1 1/2	11	13-18	17-26	72		
	PG29	2	11	18-25	25-35	72		
	PG36	-	13	22-32	-	77		
	PG42	-	13	30-38	-	77		
PG48	-	13	34-44	-	89			

DQM

Type cable-clamped seal connector
(II C, DIP)

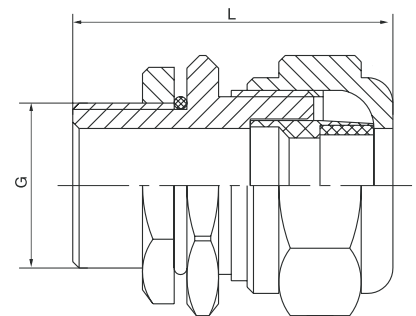


I 型 Type

I型：采用优质碳钢或不锈钢制作，采用机械式电缆夹紧装置。

Type II : Made of high-quality steel or stainless steel by mechanical cable-clamped device.

产品型号 Type	电缆外径(φ, mm) Cable's outside diameter	L	防爆标志 Ex-mark	防护等级 Protection grade
DQM-II G1/2"	7~9	55	Exd II C Gb/DIP A20	IP65
DQM-II G3/4"	8~14	55		
DQM-II G1"	12~17	67		
DQM-II G1 1/4"	13~23	72		
DQM-II G1 1/2"	17~26	77		
DQM-II G2"	25~35	89		



II 型 Type

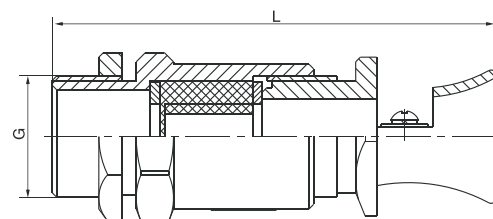
DQM

系列夹紧密封接头 (II C、DIP)

III 型：采用优质碳钢或不锈钢制作，采用铸铝机械式电缆夹紧装置。

Type III: Made of high-quality steel or stainless steel by mechanical cable-clamped device.

产品型号 Type	电缆外径(φ, mm) Cable's outside diameter	L	防爆标志 Ex-mark	防护等级 Protection grade
DQM-III G1/2"	7-9	86	Exd II C Gb/DIP A20	IP65
DQM-III G3/4"	8-14	87		
DQM-III G1"	12-17	113		
DQM-III G1 1/4"	13-23	130		
DQM-III G1 1/2"	17-26	130		
DQM-III G2"	25-35	142		
DQM-III G2 1/2"	29-38	142		
DQM-III G3"	33-51	158		



III 型 Type

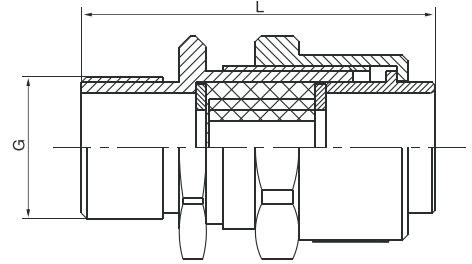
IV 型：采用优质碳钢或不锈钢制作，采用机械式电缆夹紧装置。

Type IV: Made of high-quality steel or stainless steel by mechanical cable-clamped device.

产品型号 Type	电缆外径(φ, mm) Cable's outside diameter	L	防爆标志 Ex-mark	防护等级 Protection grade
DQM-IV G1/2"	7-9	55	Exd II C Gb/DIP A20	IP65
DQM-IV G3/4"	8-14	55		
DQM-IV G1"	12-17	67		
DQM-IV G1 1/4"	13-23	67		
DQM-IV G1 1/2"	17-26	72		
DQM-IV G2"	25-35	72		
DQM-IV G2 1/2"	29-38	77		
DQM-IV G3"	33-51	89		

DQM

Type cable-clamped seal connector
(II C, DIP)

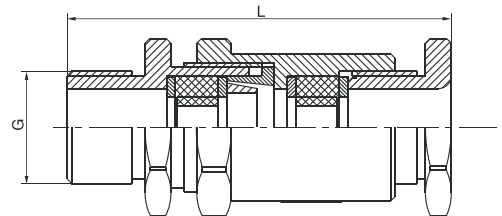


IV型 Type

V 型：采用优质碳钢或不锈钢制作，采用机械式电缆夹紧装置。

Type V: Made of high-quality steel or stainless steel by mechanical cable-clamped device.

产品型号 Type	电缆外径(φ, mm) Cable's outside diameter	L	防爆标志 Ex-mark	防护等级 Protection grade
DQM-V G1/2"	7~9	70	Exd II C Gb/DIP A20	IP65
DQM-V G3/4"	8~14	70		
DQM-V G1"	12~17	82		
DQM-V G1 1/4"	13~23	82		
DQM-V G1 1/2"	17~26	87		
DQM-V G2"	25~35	92		
DQM-V G2 1/2"	29~38	92		
DQM-V G3"	33~51	105		



V型 Type

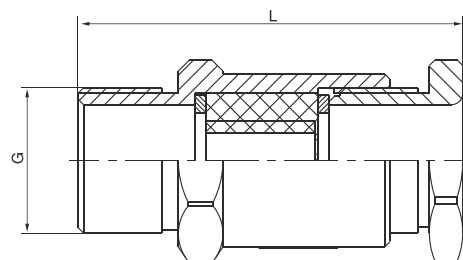
DQM

系列夹紧密封接头 (II C、DIP)

VI 型：采用优质碳钢或不锈钢制作，采用机械式电缆夹紧装置。

Type VI: Made of high-quality steel or stainless steel by mechanical cable-clamped device.

产品型号 Type	电缆外径(φ, mm) Cable's outside diameter	L	防爆标志 Ex-mark	防护等级 Protection grade
DQM-VI G1/2"	7-9	55	Exd II C Gb/DIP A20	IP65
DQM-VI G3/4"	8-14	55		
DQM-VI G1"	12-17	67		
DQM-VI G1 1/4"	13-23	67		
DQM-VI G1 1/2"	17-26	72		
DQM-VI G2"	25-35	77		
DQM-VI G2 1/2"	29-38	77		
DQM-VI G3"	33-51	89		



VI型 Type

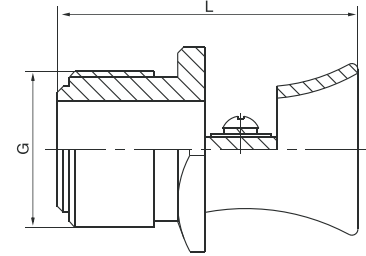
VII 型：采用铝合金制作，采用铸铝机械式电缆夹紧装置。

Type VII: Made of aluminium alloy by mechanical cable-clamped device.

异径 Reducer A	尺寸 Size			防护等级 Protection grade	电缆外径(φ, mm) Cable's outside diameter	重量 Mass (kg)
	B	C	D			
G15	12	30	25	IP65 Exd II C Gb/DIP A20	7~9	0.06
G20	12	40	35		8~14	0.06
G25	12	50	45		12~17	0.16
G32	15	60	50		13~23	0.30
G40	30	80	78		17~26	0.34
G50	30	90	80		25~35	0.46
G70	30	110	85		29~38	1.12

DQM

Type cable-clamped seal connector
(II C, DIP)

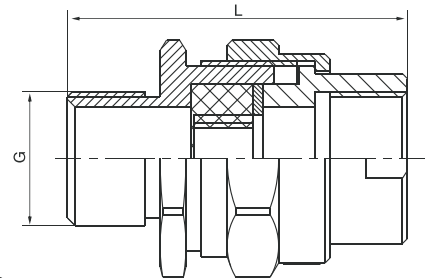


VII型 Type

VII型：采用优质碳钢或不锈钢制作，采用机械式电缆夹紧装置。

Type VII: Made of high-quality steel or stainless steel by mechanical cable-clamped device.

产品型号 Type	电缆外径(φ, mm) Cable's outside diameter	L	防爆标志 Ex-mark	防护等级 Protection grade
DQM-VII G1/2"	7~9	55	Exd II C Gb/DIP A20	IP65
DQM-VII G3/4"	8~14	55		
DQM-VII G1"	12~17	67		
DQM-VII G1 1/4"	13~23	63		
DQM-VII G1 1/2"	17~26	72		
DQM-VII G2"	25~35	72		
DQM-VII G2 1/2"	29~38	77		
DQM-VII G3"	33~51	77		



VIII型 Type